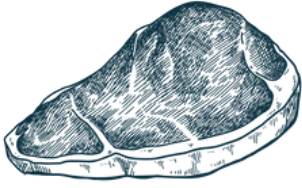




THE **PLOUGH** INN



Set Menu
Three Courses £35
Tuesday - Thursday

Starters

SMOKED WAGYU BEEF TARTARE

Spiced Dressing, Smoked & Cured Egg Yolk, Dripping Toast (g/sd/e/f/m)

BEETROOT & CHERRY SMOKED SALMON

Lemon Crème Fraiche, Caperberries, Chilli Jam, Crisp Bread (f/s/sd/d/g)

SWEET POTATO SOUP

Toasted Pistachio, Sweet Potato Crisp (vg/s/n-pistachio)

BURRATA

Walnut, Tangerine, Endive, Honey Dressing (v/d/sd/n-walnut)



Mains

FILLET OF COD

Herb Crust, Crushed Potatoes, Dill & Lemon Sauce, Crispy Kale (f/d/g/sd)

250g BAVETTE STEAK

Peppercorn Sauce, Chips (d/f/g/sd)

WILD MUSHROOM RISOTTO

Roasted Walnut, Stilton, Red Chicory (v/d/n-walnut)

Desserts

STICKY TOFFEE PUDDING

Toffee Sauce, Vanilla Ice Cream (v/g/d/e/s)

VEGAN CHOCOLATE TART

Caramelised Banana Ice Cream (vg/n-cashew, almond)

BURRATA CHEESECAKE

Raspberry & Crispy Wafer (v/d/g)



Before ordering, please speak to our staff if you have a food allergy or intolerance

Whilst we take every precaution, please beware, the consumption of under cooked burgers may present a health risk

A discretionary service charge of 12.5 % will be added to your bill. All prices are inclusive of VAT.

Please see below our allergen code which represents what allergens are in specific dishes:

Vegetarian (v) Vegan (vg) Celery (c) Cereals containing gluten (g) Crustacean (cr) Eggs (e) Fish (f) Lupin (l) Dairy (d) Molluscs (mol) Mustard (m) Nuts (n)
Peanuts (pn) Sesame Seeds (ss) Soya (s) Sulphur (sd)

**Join us in supporting Hospitality Action*