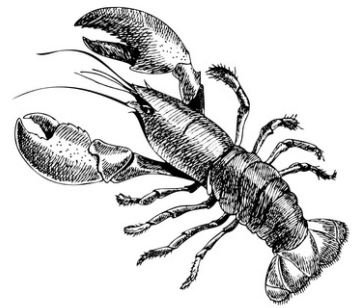


THE PLOUGH INN



APÉRITIFS

GLASS OF CHAPEL DOWN BRUT English Sparkling
Tenterden, Kent / **£9.5**

LYCHEE LONG TIME Plantation 3 Star Rum, Lychee
Liquor, Fresh Lime, Green Tea Syrup, Basil (sd) / **£10.25**

SNACKS

MARINATED OLIVES (vg/sd) / **£5.5**

ROSEMARY ALMONDS (v/n) / **£5.5**

SALTED CASHEWS & PEANUTS (v/n/pn) / **£5**

BAKED SOURDOUGH Garlic Butter (v/d/g) / **£7**

GRILLED ROSEMARY FOCACCIA Beetroot Hummus,
Chives (v/g/ss/s) / **£5.5**

SMOKED LANCASHIRE CHEESE Honey, Balsamic &
Oregano (d/sd/n-almond) / **£6**

STARTERS

PAN FRIED PRAWNS Grapefruit Vinaigrette, Shallot Aioli, Focaccia (cr/m/g/e/sd) / **£14**
FULL BLOOD WAGYU BEEF STEAK TARTARE Spiced Dressing, Smoked & Cured Egg Yolk,
Dripping Toast (g/sd/e/f/m) / **£15.5**

BEETROOT CURED & SMOKED SALMON Lemon Creme Fraiche, Caperberries,
Chilli Jam, Crisp Bread (f/s/sd/d/g) / **£12**

COBBLE LANE CHARCUTERIE Pickles, Olives, Grilled Rosemary Focaccia (g/sd/m) / **£19**

SWEET POTATO SOUP Toasted Pistachio, Sweet Potato Crisp (vg/s/g/n-pistachio) / **£10.5**

BURRATA Walnuts, Tangerine, Endive, Honey Dressing (v/d/sd/n-walnut) / **£12.5**

MAINS

ROAST SIRLOIN OF BEEF (d/c/g/e/sd) / **£24**

ROAST SUPREME OF CHICKEN (d/c/g/e/sd) / **£20**

ROAST BELLY OF PORK (d/c/g/e/sd) / **£21**

ROAST FOR 2 Sirloin of Beef, Belly of Pork, Supreme of Chicken (d/c/g/e/sd) / **£50**

All served with: Duck Fat Roast Potatoes, Roasted Carrots, Cabbage, Red Wine Gravy, Yorkshire Pudding

VEG & GOAT'S CHEESE WELLINGTON Roast Potatoes, Carrots, Cabbage, Gravy, Yorkshire Pudding (d/s/c/g/e/sd) / **£19**

WILD MUSHROOM RISOTTO Stilton, Red Chicory, Walnut (v/d/sd/n-walnut) / **£16.5**

FILLET OF COD Herb Crust, Crushed New Potatoes, Dill Sauce (f/e/sd) / **£29**

BEETROOT CARPACCIO Roasted Pumpkin, Mint Gremolata (vg/sd) / **£16**

HIGHLAND WAGYU BURGER Smoked Bacon, Oglesfield Cheese, Brioche Bun,
Tomato Chutney, Chips (d/g/m/e/sd) / **£20**

STEAKS

Your choice of sauce from:

Peppercorn Sauce (g/f/d), Red Wine Sauce (sd)

Roasted Garlic Butter (d), Blue Cheese Sauce (d)

250g BAVETTE / **£22**

200g FILLET / **£36**

300g RIBEYE / **£37**

Our larger cuts have limited availability & are priced
individually, please see our specials menu for more
information.

SIDES

CHIPS - SKINNY OR CHUNKY (vg) / **£5**

INVISIBLE CHIPS 0% Fat 100% Charity / **£4.5**

ROASTED FLAT MUSHROOMS Garlic (v/d) / **£5.5**

TRUFFLE MAC & CHEESE (v/g/d/sd) / **£6**

MIXED LEAF SALAD Pickled Red Onion
(vg/sd) / **£4.75**

TENDERSTEM BROCCOLI Chilli & Hazelnut
(v/n) / **£7**

HASSELBACK POTATOES Pancetta &
Bone Marrow Butter (d) / **£7**

BUTTERHEAD LETTUCE Blue Cheese Dressing,
Croutons (f/e/m/d/g/sd) / **£5.5**

Before ordering, please speak to our staff if you have a food allergy or intolerance

Whilst we take every precaution, please beware, the consumption of under cooked burgers may present a health risk

A discretionary service charge of 12.5 % will be added to your bill. All prices are inclusive of VAT.

Please see below our allergen code which represents what allergens are in specific dishes:

Vegetarian (v) Vegan (vg) Celery (c) Cereals containing gluten (g) Crustacean (cr) Eggs (e) Fish (f) Lupin (l) Dairy (d) Molluscs (mol) Mustard (m) Nuts (n)
Peanuts (pn) Sesame Seeds (ss) Soya (s) Sulphur (sd)

